

Features

- ◇ Strong suction force and good wear resistance.
- ◇ Suitable for case unpacking machine and handling non – rigid and soft packing materials.
- ◇ Suitable for applications of washing packing bags which have chlorinated disinfectant(pharmaceuticals industry).
- ◇ Bellows structure and soft seal lip are suitable for handling fragile and slender workpiece.



Applications

- ◇ CD&DVD
- ◇ Thin and long package
- ◇ Packing box, packing bag

How to order

SBOF 35×28 V – M10M

① ② ③ ④

① Series	② Diameter	③ Material & Hardness	④ Connection thread
SBOF	35×28mm 45×28mm	V – Vinyl 55	Nil – Suction cup only M10M – M10 Male thread G2M – G1/4 Male thread G2F – G1/4 Female thread

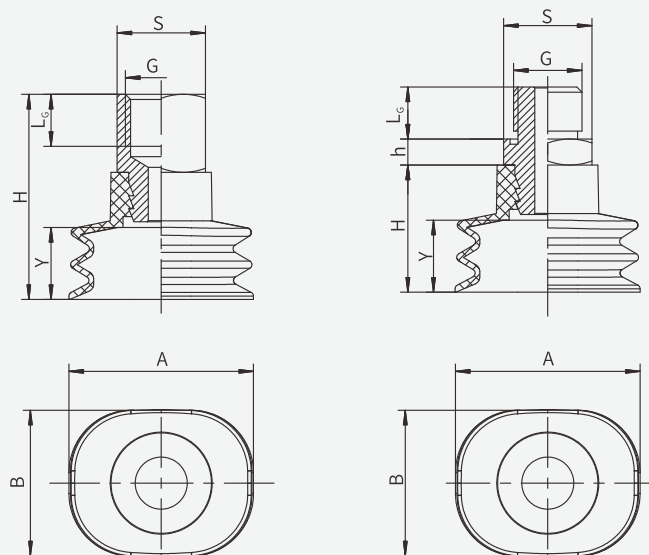
Technical parameters

Model	Pull-out force (N)	Inner volume (cm ³)	Min. curve radius of workpiece(mm)	Recommended hose diameter(mm)
SBOF35×28	44	22	39	8
SBOF45×28	57	26	39	8

◇ Note: Testing vacuum level: -60kPa. Testing Workpiece: smooth and clean surface. The data of pull-out force as above are figured out without considering safety factor. The data may be different according to different workpiece surfaces.

SB
SBA
SBB
SBF
SBOF
SFT
SFA
STP
SBL
SBLP
SBS
SF
SU
SUF
SFG
STU
STC
SFF
SFM
SDM
SHT
SOFA
SOB
SOF
SOG
SFP
SBP
SXP
SGP
SDL
SH
SHB
SZ
SAN
SAO
SPA
SPC
SPF
SPJ
SPU
SNP
SOP

Dimensions(mm)



Female connection

Male connection

Model/Size	A	B	H	Y	h	G	L _g	S
SBOF35×28-M10M	35	28	24.5	12	5	M10	10	17
SBOF35×28-G2M	35	28	24.5	12	5	G1/4	10	17
SBOF35×28-G2F	35	28	39.5	12	–	G1/4	12	17
SBOF45×28-M10M	45	28	25	13	5	M10	10	17
SBOF45×28-G2M	45	28	25	13	5	G1/4	10	17
SBOF45×28-G2F	45	28	40	13	–	G1/4	12	17

Mounting parts

Item	Model	Applicable suction cup
Fitting for suction cup	PJS-M10M-SBOF PJS-G2M-SBOF PJS-G2F-SBOF	SBOF35×28, 45×28

◇Note:Please refer to page 22 for mounting parts selection.